



## Pure Grain Barley Trial Update

### Moree NSW

**Project:** Determining a pathway towards net zero: increasing nitrogen mineralization and uptake by wheat and barley using biological seed and soil additives for a sustainable Grain farming system.

Converte products were selected by Pure Grain to be part of a three year field trial near Moree NSW, at their Boolahfarms site in Pallamallawa. The trial is focused on increasing nitrogen mineralisation and uptake by wheat and barley using selective biological additives.

#### **Trial summary**

A 33% reduced rate of Urea, alongside a negative and positive control in conjunction with the biological additives selected from 6 different companies (Converte, Omnia, Stoller, RLF, Synthia Bio and Corteva) in a side-by-side strip trial that covers 45 hectares.

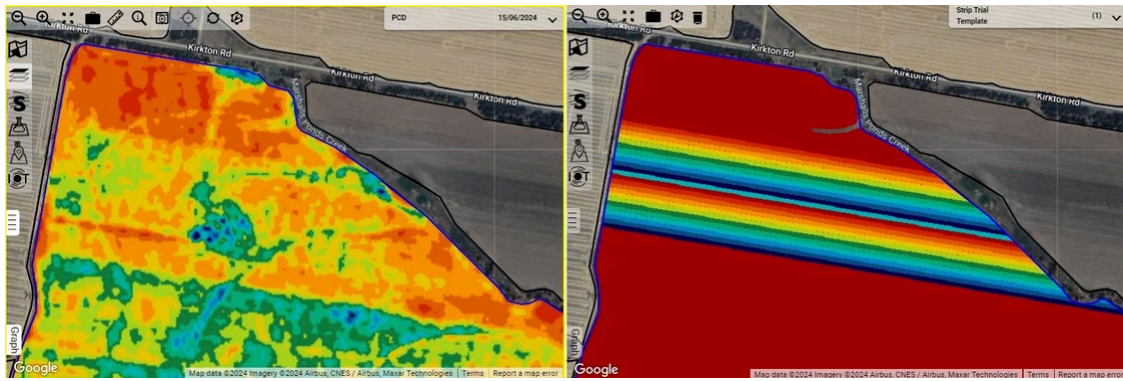
Treatment locations will remain the same over the three years with three replicates of the 6 treatments and assessed against the following: crop establishment, vigour, yield and quality with a gross margin analysis using variable and fixed costs. For our component of the trial we used our seed primer applied at a rate of 500ml / tonne of seed and the Plantfood Super Concentrate applied at about 8 weeks post sowing - see picture below:



[Read More about Seed Primer and Plantfood Here](#)

### **Sampling and Monitoring**

Soil sampling occurred just prior to planting for nutritional, DNA and microbial activity analysis. The Pure Grain team are also using satellite technology to regularly map and assess the progress of the trial. The image below is an PCD Plant Cell Density satellite image across the trial site, lots of variability at the moment but we will know more as the crops become established in the coming weeks.



## Reporting Trial Outcomes

A preliminary report should be released by January 2025, and we are very interested to see how Converte products compare to both the controls and the other products trialed. This is year 1 of a 3 year trial and we will be tracking improvements in soil health as well as yield and productivity over the following two years.

Findings of this trial will help agricultural industries' and agronomists incorporate biological products more easily into input and farm management programs. The trial data will also assist by informing farmers in relation to reducing carbon input costs and how biologicals fit into the transition to net zero. This independent research will give Converte further insight into how our Seed Primer and Plantfood impacts on N mineralisation, especially within the broader alluvial soils on the Moree Plains.

Feel free to reach out to any of our team if you have any questions or come see us at field days and events for a chat as we would love to keep our clients updated with this trial and its progress, so please keep an eye out on our social media platforms for further information and updates.

Pure Grain are hosting a field day on the 11th of September, starting at Pallamallawa and heading out to the trial site at Dimboola. If you are in the region and are interested in attending this event, please let us know. You can also check out @boolahfarms on Instagram.

[Read More about Pure Grain Here](#)





## SAVE THE DATE

TRIAL FARM FIELD DAY

Wednesday 11th September 2024

### THE FUTURE OF **SUSTAINABILITY** IN AGRICULTURE

See our developments in circular economy, regenerative grain production systems and products that are reducing GHG emissions on our 400ha broad acre trial farm Dimboola.

Meet at - Pally Pub, 53 Bingara Street, Pallamallawa

Trial Farm - 'Dimboola', 956 County Boundary Road, Pallamallawa

Proudly supported by



## More Trial Information

In the last few years Converte have completed more than 120 independent trials with our products and we are happy to share this data and explain the findings with our customers. The crops covered in these trials include:

- wheat
- chickpeas
- tomatoes
- potatoes
- grapes
- tumeric
- corn
- lettuce

For trial summaries or to discuss trial data with our team of Ag Scientists call us on 1800 108 940 or email on [info@converte.com.au](mailto:info@converte.com.au)

Click below for publically accessible information on our website.

[Converte Testimonials and Trial Summaries](#)

Converte Pty Ltd, Unit 3, 68 Willandra Ave, Griffith, NSW 2680, Australia, 1800 108 940

[Unsubscribe](#) [Manage preferences](#)

