



# Converte Dairy Trial Euberta NSW

Dairy production using Converte liquid products on pastures and crops helped with soil pH correction and plant growth with longer seasonal use of pastures. The Plantfood Super Concentrate kept pastures greener and working longer under heavy grazing pressures. The Dairy operators recorded an increase in milk volume with fat and protein percentages also rising. The overall cow condition whilst milking hard was noticed to improve, while cows going back into calf earlier was achievable using Converte products.



**Quality Forage**



**Higher Protein**



**Milk Production**



Growing forage Sorghum kept cows well fed and producing well through Summer and Autumn months. A quick growth turnaround was achieved using 300mls to Ha of Plantfood Super Concentrate, coupled with 3-5 liters / Ha of Exceletrate. This regime produced an amazing response with irrigation.



# Driving Pasture and Forage Feed Quality

The ultimate goal is to produce higher quality produce that will lead to benefits up the food-chain in feed, animal health, milk and in human health.

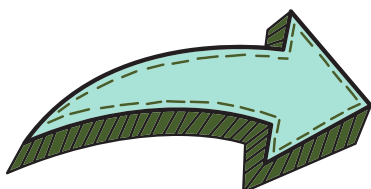
Converte have measured the biological change the Plantfood is causing by looking at gene abundance in the soils and measured 138% increases in pastures after a single application. The extra biology is working on nutrient availability and transfer, opening up the soil structure, enhancing moisture retention and reducing compaction. Stock will preferentially feed where they detect higher concentrations of available nutrients and observing their behaviour is perhaps the best endorsement of the quality of grasses and feed.

In this trial of forage Sorghum (Pioneer) we undertook plant tissue tests and all trace elements were found to be significantly higher in the Plantfood treated Sorghum. It was also noted that crude protein increased 62% and the C:N ratio was reduced to levels more compatible with gut biology.

**This farmer was able to produce quality feed and milk production and at the same time reduce chemical inputs significantly providing an overall cost saving for the dairy operation.**



**7 days post  
Converte  
Application**



Parameter	Converte Treated	Control	% Difference
Copper (mg/kg)	8.6	5.4	59%
Zinc (mg/kg)	25	29	-14%
Manganese (mg/kg)	76	47	61%
Iron (mg/kg)	213	56	380%
Boron (mg/kg)	6.4	3.9	64%
Molybdenum (mg/kg)	0.84	0.58	45%
Cobalt (mg/kg)	0.46	0.26	77%
Silicon (mg/kg)	1,173	666	76%
Carbon : Nitrogen Ratio	13.8	19.9	-31%
Crude Protein (%)	18.5	11.4	62%

***"Improved nutrition in forage feeds, builds health in dairy cattle, milk production and through the food-chain"***

**Farmer: Stuart Davidson**

